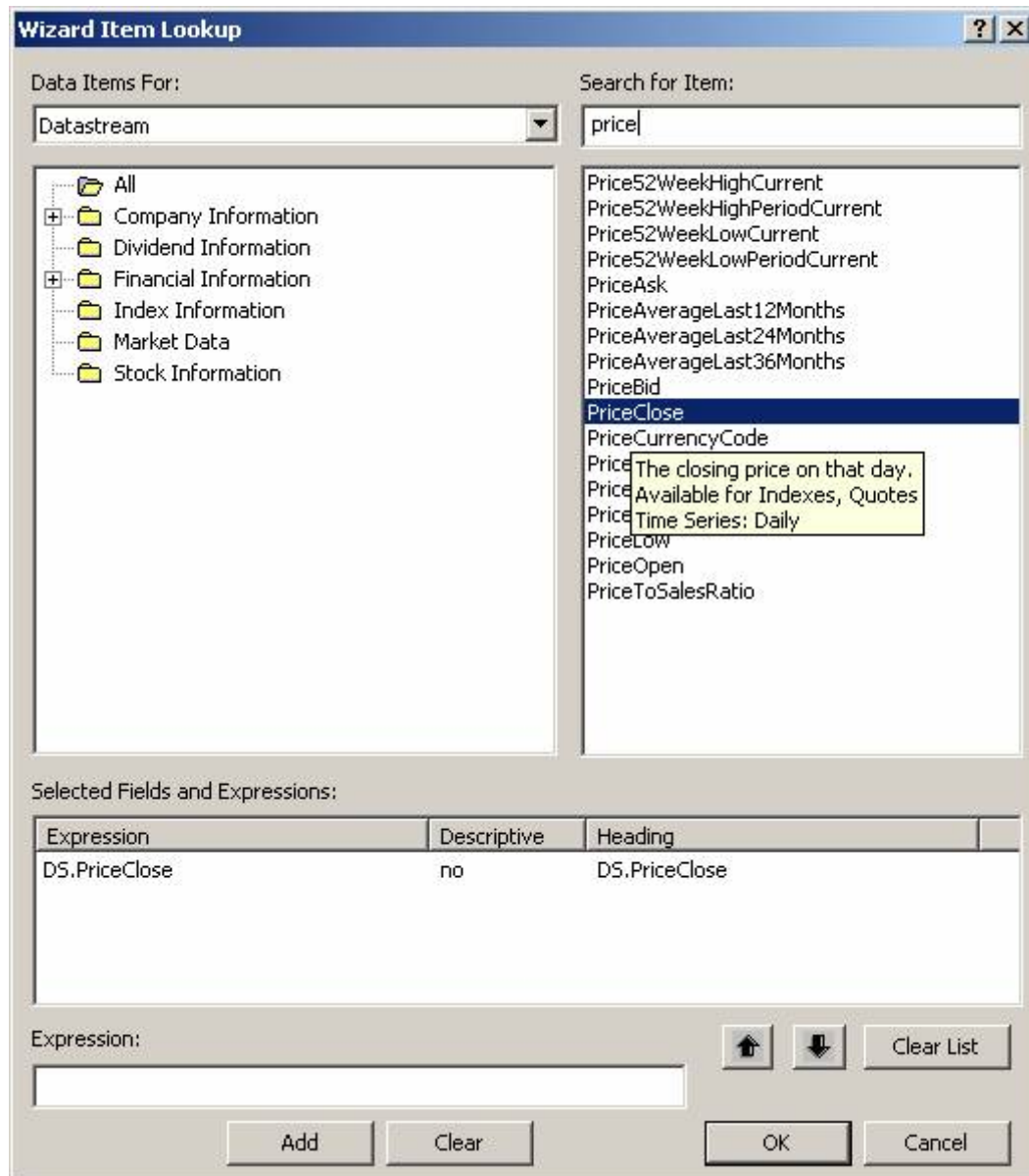


comment peut on extraire de TOB en utilisant l'excel  
add in les cours  
quotidien d'une entreprise donné.

Ci-joint vous trouverez les copies d'écran expliquant la marche à suivre :

1) Data Item



2) Modify the Start Date

**Thomson ONE Banker Report Wizard**

The Thomson ONE Banker Report Wizard allows you to download data and create simple reports directly in Excel. Follow the steps below to retrieve your data.

Current Project:

**Step 1:** Select Items:

Data Item	Descr?
DS.PriceClose	

**Step 2:** Select Entities

Add: Companies

Entity Name

**Step 3:** Select the Starting Period and Number of Periods:

Starting Period (most recent period) Ending Period (historical period) Frequency

3) Frequency box not greyed anymore

**Thomson ONE Banker Report Wizard**

The Thomson ONE Banker Report Wizard allows you to download data and create simple reports directly in Excel. Follow the steps below to retrieve your data.

Current Project:

**Step 1:** Select Items:

Data Item	Descr?
DS.PriceClose	

**Step 2:** Select Entities

Add: Companies  Add

Entity Name

**Step 3:** Select the Starting Period and Number of Periods:

Starting Period (most recent period) Ending Period (historical period) Frequency

4) Amend to daily frequency

Thomson ONE Banker Report Wizard

**Thomson ONE Banker Report Wizard**

The Thomson ONE Banker Report Wizard allows you to download data and create simple reports directly in Excel. Follow the steps below to retrieve your data.

Current Project:

**Step 1:** Select Items:

Data Item	Descr?
DS.PriceClose	

Add/Edit Items    Load Saved Items    Items

**Step 2:** Select Entities

Add: Companies [ ] Add

Entity Name
-------------

▲  
▼  
DEL  
CLR

Add Entities    Save Set    Entities

**Step 3:** Select the Starting Period and Number of Periods:

Starting Period (most recent period)    Ending Period (historical period)    Frequency  
Last Day Traded(CPD)    3 Years Ago(-3Y)    Yearly

- Daily
- Weekly
- Monthly
- Quarterly
- Yearly

Load Project    Save Project    Clear Settings    Cancel    Next >    Finish